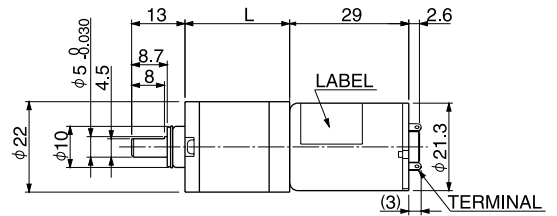
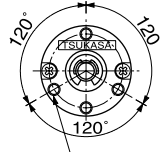


# RU

TG-01F  
TG-01G  
TG-01H



4-M3 (DEPTH 3.5max)  
P.C.D.  $\phi$ 18

Allowable torque-speed characteristics

MODEL	GEAR RATIO	GEAR RATIO													
		1/3.7	1/5	1/13.4	1/18.3	1/25	1/49.3	1/67.2	1/91.7	1/125	1/181	1/246	1/336	1/458	1/625
TG-01F-RU (24V)	SPEED(r/min)	1108	815	301	227	170	82.6	60.9	44.1	33.2	23.3	17.4	12.9	9.5	7
	TORQUE(mN-m)	2.94	3.92	9.8	9.8	9.8	29.4	39.2	58.8	58.8	58.8	58.8	58.8	58.8	58.8
	TORQUE(kg-cm)	0.03	0.04	0.1	0.1	0.1	0.3	0.4	0.6	0.6	0.6	0.6	0.6	0.6	0.6
TG-01G-RU (24V)	SPEED(r/min)	2079	1528	566	423	314	155	114	82.9	62	43.3	32.1	23.7	17.5	12.9
	TORQUE(mN-m)	2.94	3.92	9.8	9.8	9.8	29.4	39.2	58.8	58.8	58.8	58.8	58.8	58.8	58.8
	TORQUE(kg-cm)	0.03	0.04	0.1	0.1	0.1	0.3	0.4	0.6	0.6	0.6	0.6	0.6	0.6	0.6
TG-01H-RU (12V)	SPEED(r/min)	2084	1532	567	424	315	155	114	83.1	62.1	43.4	32.2	23.8	17.5	12.9
	TORQUE(mN-m)	2.94	3.92	9.8	9.8	9.8	29.4	39.2	58.8	58.8	58.8	58.8	58.8	58.8	58.8
	TORQUE(kg-cm)	0.03	0.04	0.1	0.1	0.1	0.3	0.4	0.6	0.6	0.6	0.6	0.6	0.6	0.6

GEAR RATIO	L (mm)	STAGE	TORQUE (kg-cm)	WEIGHT (g)
1/3.7~1/5	15.5	1	0.3	24
1/13.4~1/25	20.5	2	0.6	27
1/49.3~1/125	25.5	3	0.6	30
1/181~1/625	30.5	4	0.6	33

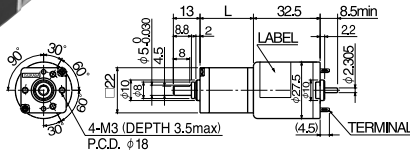
# TG-47

(0.7~2.6W)  $\phi$  27, 5 SLOTS,  
LONG LIFE, ENCODER CAN BE MOUNTED.

APPLICATION: VENDING MACHINE, TICKETTING MACHINE, GAMING MACHINE, ATM,  
CUTTING MACHINE, BANKING MACHINE. etc.

# EU

TG-47A  
TG-47B  
TG-47C



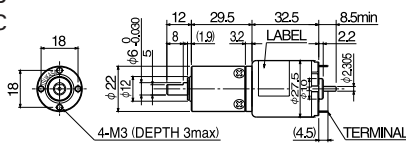
Allowable torque-speed characteristics

MODEL	GEAR RATIO	GEAR RATIO									
		1/12.1	1/17.6	1/20.6	1/25.5	1/42.1	1/61.2	1/71.7	1/88.7	1/104	1/129
TG-47A-EU (24V)	SPEED(r/min)	378	252	207	165	103	69.7	58.8	47.8	40.8	33.7
	TORQUE(mN-m)	9.8	19.6	29.4	39.2	49	78.4	98	117.6	137.2	147
	TORQUE(kg-cm)	0.1	0.2	0.3	0.4	0.5	0.8	1	1.2	1.4	1.5
TG-47B-EU (24V)	SPEED(r/min)	568	375	327	257	158	108	91.3	76.2	66.3	54.7
	TORQUE(mN-m)	19.6	39.2	39.2	58.8	78.4	117.6	147	147	147	147
	TORQUE(kg-cm)	0.2	0.4	0.4	0.6	0.8	1.2	1.5	1.5	1.5	1.5
TG-47C-EU (12V)	SPEED(r/min)	386	257	212	169	105	71.1	60	48.7	41.6	34.4
	TORQUE(mN-m)	9.8	19.6	29.4	39.2	49	78.4	98	117.6	137.2	147
	TORQUE(kg-cm)	0.1	0.2	0.3	0.4	0.5	0.8	1	1.2	1.4	1.5

GEAR RATIO	L (mm)	STAGE	TORQUE (kg-cm)	WEIGHT (g)
1/12.1~1/25.5	21	2	1	34
1/42.1~1/129	26	3	1.5	36

# FU

TG-47A  
TG-47B  
TG-47C



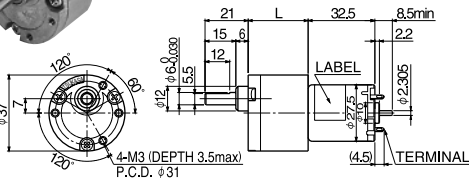
Allowable torque-speed characteristics

MODEL	GEAR RATIO	GEAR RATIO													
		1/4	1/4.7	1/16	1/19	1/23	1/64	1/76	1/90	1/107	1/256	1/304	1/361	1/429	1/509
TG-47A-FU (24V)	SPEED(r/min)	1055	894	273	235	192	66.9	55.8	46.9	39.6	16.5	14.3	12.3	10.6	9.1
	TORQUE(mN-m)	6.86	7.84	19.6	19.6	29.4	78.4	98	117.6	137.2	294	294	294	294	294
	TORQUE(kg-cm)	0.07	0.08	0.2	0.2	0.3	0.8	1	1.2	1.4	3	3	3	3	3
TG-47B-FU (24V)	SPEED(r/min)	1651	1426	423	350	292	102	86.6	72.8	62	27.1	23.2	19.8	16.9	14.4
	TORQUE(mN-m)	9.8	9.8	29.4	39.2	49	127.4	147	176.4	196	294	294	294	294	294
	TORQUE(kg-cm)	0.1	0.1	0.3	0.4	0.5	1.3	1.5	1.8	2	3	3	3	3	3
TG-47C-FU (24V)	SPEED(r/min)	2289	1970	561	469	394	136	114	99.4	85.8	37.3	31.9	27.2	23.1	19.6
	TORQUE(mN-m)	9.8	9.8	39.2	49	58.8	166.6	196	196	294	294	294	294	294	294
	TORQUE(kg-cm)	0.1	0.1	0.4	0.5	0.6	1.7	2	2	3	3	3	3	3	3
TG-47C-FU (12V)	SPEED(r/min)	1076	912	278	240	196	68.2	56.9	47.8	40.4	16.9	14.6	12.6	10.8	9.3
	TORQUE(mN-m)	6.86	7.84	19.6	19.6	29.4	78.4	98	117.6	137.2	294	294	294	294	294
	TORQUE(kg-cm)	0.07	0.08	0.2	0.2	0.3	0.8	1	1.2	1.4	3	3	3	3	3

GEAR RATIO	L (mm)	STAGE	TORQUE (kg-cm)	WEIGHT (g)
1/4~1/4.7	19.5	1	0.5	41
1/16~1/23	24.5	2	1	49
1/64~1/107	29.5	3	2	57
1/256~1/509	34.5	4	3	66

# LG

TG-47A  
TG-47B  
TG-47C



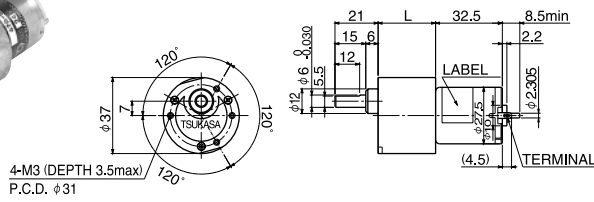
Allowable torque-speed characteristics

MODEL	GEAR RATIO	GEAR RATIO									
		1/6	1/9	1/13	1/20	1/29	1/44	1/66	1/100	1/148	1/224
TG-47A-LG (24V)	SPEED(r/min)	734	509	353	226	150	97.7	65.2	42.8	28.7	19.4
	TORQUE(mN-m)	8.82	9.8	9.8	19.6	29.4	49	68.6	107.8	147	196
	TORQUE(kg-cm)	0.09	0.1	0.1	0.2	0.3	0.5	0.7	1.1	1.5	2
TG-47B-LG (24V)	SPEED(r/min)	1189	756	529	337	229	150	100	66.1	45.3	30
	TORQUE(mN-m)	9.8	19.6	19.6	39.2	49	78.4	107.8	166.6	196	294
	TORQUE(kg-cm)	0.1	0.2	0.2	0.4	0.5	0.8	1.1	1.7	2	3
TG-47C-LG (24V)	SPEED(r/min)	1639	1048	692	451	300	197	132	89.4	58.8	41.5
	TORQUE(mN-m)	9.8	19.6	29.4	49	68.6	107.8	147	196	294	294
	TORQUE(kg-cm)	0.1	0.2	0.3	0.5	0.7	1.1	1.5	2	3	3
TG-47C-LG (12V)	SPEED(r/min)	749	519	360	231	153	99.7	66.5	43.7	29.3	19.8
	TORQUE(mN-m)	8.82	9.8	9.8	19.6	29.4	49	68.6	107.8	147	196
	TORQUE(kg-cm)	0.09	0.1	0.1	0.2	0.3	0.5	0.7	1.1	1.5	2

GEAR RATIO	L (mm)	STAGE	TORQUE (kg-cm)	WEIGHT (g)
1/6,1/9	25.7	2	0.5	69
1/13,1/20	25.7	3	1	73
1/29	29.2	4	1	77
1/44	29.2	4	2	77
1/66,1/100	32.6	5	3	81
1/148,1/224	36.1	6	3	85

# SG/SM

TG-47A  
TG-47B  
TG-47C



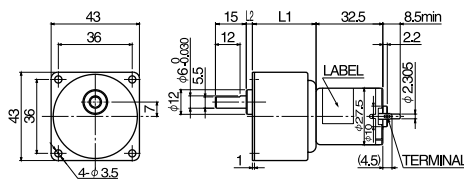
GEAR RATIO	L (mm)	STAGE	TORQUE (kg-cm)	WEIGHT (g)
1/5~1/10	20.5	2	1	100
1/12.5~1/30	23	3	2	105
1/36~1/100	25.5	4	3	110
1/120~1/300	28	5	6	115
1/360~1/1000	30.5	6	6	120
1/1500~1/3000	33	7	6	125

Allowable torque-speed characteristics

MODEL	GEAR RATIO	TORQUE (kg-cm)																			
		1/5	1/10	1/15	1/18	1/25	1/30	1/36	1/50	1/60	1/75	1/100	1/120	1/150	1/200	1/250	1/300	1/500	1/750	1/1000	1/1500
TG-47A-SG (24V)	SPEED(r/min)	845	452	285	245	174	143	120	85.6	71.7	57.1	42.2	35.2	28.3	21.7	17.3	14.1	8.5	5.9	4.6	3.1
	TORQUE(mN-m)	7.84	9.8	19.6	19.6	29.4	39.2	39.2	58.8	68.6	88.2	127.4	137.2	166.6	196	245	343	490	588	588	588
	TORQUE(kg-cm)	0.08	0.1	0.2	0.2	0.3	0.4	0.4	0.6	0.7	0.9	1.3	1.4	1.7	2	2.5	3.5	5	6	6	6
TG-47B-SG (24V)	SPEED(r/min)	1349	674	443	379	266	221	182	133	110	88	65.8	55.1	44.1	32.8	26.6	22	13.6	9.5	7.3	4.9
	TORQUE(mN-m)	9.8	19.6	29.4	29.4	49	58.8	68.6	88.2	107.8	137.2	186.2	196	245	343	392	490	588	588	588	588
	TORQUE(kg-cm)	0.1	0.2	0.3	0.3	0.5	0.6	0.7	0.9	1.1	1.4	1.9	2	2.5	3.5	4	5	6	6	6	6
TG-47C-SG (24V)	SPEED(r/min)	1865	876	586	483	348	293	242	173	145	116	87.2	73.7	57.7	43.6	35	29.7	18.8	13	9.9	6.7
	TORQUE(mN-m)	9.8	29.4	39.2	49	68.6	78.4	88.2	127.4	147	186.2	245	245	343	441	539	588	588	588	588	588
	TORQUE(kg-cm)	0.1	0.3	0.4	0.5	0.7	0.8	0.9	1.3	1.5	1.9	2.5	2.5	3.5	4.5	5.5	6	6	6	6	6
TG-47C-SG (12V)	SPEED(r/min)	862	461	291	250	178	146	123	87.4	73.1	58.2	43.1	35.9	28.9	22.1	17.7	14.4	8.7	6	4.7	3.2
	TORQUE(mN-m)	7.84	9.8	19.6	19.6	29.4	39.2	39.2	58.8	68.6	88.2	127.4	137.2	166.6	196	245	343	490	588	588	588
	TORQUE(kg-cm)	0.08	0.1	0.2	0.2	0.3	0.4	0.4	0.6	0.7	0.9	1.3	1.4	1.7	2	2.5	3.5	5	6	6	6

# AG

TG-47A  
TG-47B  
TG-47C



GEAR RATIO	L1 (mm)	L2 (mm)	STAGE	TORQUE (kg-cm)	WEIGHT (g)
1/5~1/10	26	0.5	2	1	90
1/12.5~1/30	26	3	3	2	95
1/36~1/100	26	5.5	4	3	100
1/120~1/300	31	3	5	6	105
1/360~1/1000	31	5.5	6	6	110
1/1500~1/3000	31	8	7	6	115

Allowable torque-speed characteristics

MODEL	GEAR RATIO	TORQUE (kg-cm)																			
		1/5	1/10	1/15	1/18	1/25	1/30	1/36	1/50	1/60	1/75	1/100	1/120	1/150	1/200	1/250	1/300	1/500	1/750	1/1000	1/1500
TG-47A-AG (24V)	SPEED(r/min)	845	452	285	245	174	143	120	85.6	71.7	57.1	42.2	35.2	28.3	21.7	17.3	14.1	8.5	5.9	4.6	3.1
	TORQUE(mN-m)	7.84	9.8	19.6	19.6	29.4	39.2	39.2	58.8	68.6	88.2	127.4	137.2	166.6	196	245	343	490	588	588	588
	TORQUE(kg-cm)	0.08	0.1	0.2	0.2	0.3	0.4	0.4	0.6	0.7	0.9	1.3	1.4	1.7	2	2.5	3.5	5	6	6	6
TG-47B-AG (24V)	SPEED(r/min)	1349	674	443	379	266	221	182	133	110	88	65.8	55.1	44.1	32.8	26.6	22	13.6	9.5	7.3	4.9
	TORQUE(mN-m)	9.8	19.6	29.4	29.4	49	58.8	68.6	88.2	107.8	137.2	186.2	196	245	343	392	490	588	588	588	588
	TORQUE(kg-cm)	0.1	0.2	0.3	0.3	0.5	0.6	0.7	0.9	1.1	1.4	1.9	2	2.5	3.5	4	5	6	6	6	6
TG-47C-AG (24V)	SPEED(r/min)	1865	876	586	483	348	293	242	173	145	116	87.2	73.7	57.7	43.6	35	29.7	18.8	13	9.9	6.7
	TORQUE(mN-m)	9.8	29.4	39.2	49	68.6	78.4	88.2	127.4	147	186.2	245	245	343	441	539	588	588	588	588	588
	TORQUE(kg-cm)	0.1	0.3	0.4	0.5	0.7	0.8	0.9	1.3	1.5	1.9	2.5	2.5	3.5	4.5	5.5	6	6	6	6	6
TG-47C-AG (12V)	SPEED(r/min)	862	461	291	250	178	146	123	87.4	73.1	58.2	43.1	35.9	28.9	22.1	17.7	14.4	8.7	6	4.7	3.2
	TORQUE(mN-m)	7.84	9.8	19.6	19.6	29.4	39.2	39.2	58.8	68.6	88.2	127.4	137.2	166.6	196	245	343	490	588	588	588
	TORQUE(kg-cm)	0.08	0.1	0.2	0.2	0.3	0.4	0.4	0.6	0.7	0.9	1.3	1.4	1.7	2	2.5	3.5	5	6	6	6

# VG

TG-47A  
TG-47B  
TG-47C



Allowable torque-speed characteristics

MODEL	GEAR RATIO	1/100	1/125	1/230	1/280	1/500
TG-47A-VG (24V)	SPEED(r/min)	42.2	34.1	18.7	15.5	8.3
	TORQUE(mN-m)	107.8	137.2	245	245	490
	TORQUE(kg-cm)	1.1	1.4	2.5	2.5	5
TG-47B-VG (24V)	SPEED(r/min)	65.2	53.4	28.8	23.8	13.4
	TORQUE(mN-m)	166.6	196	392	392	588
	TORQUE(kg-cm)	1.7	2	4	4	6
TG-47C-VG (24V)	SPEED(r/min)	88.2	71.5	38.5	31.3	18.4
	TORQUE(mN-m)	196	245	490	539	588
	TORQUE(kg-cm)	2	2.5	5	5.5	6
TG-47C-VG (12V)	SPEED(r/min)	40.5	32.7	18	14.9	8
	TORQUE(mN-m)	107.8	137.2	245	245	490
	TORQUE(kg-cm)	1.1	1.4	2.5	2.5	5

GEAR RATIO	L (mm)	STAGE	TORQUE (kg-cm)	WEIGHT (g)
1/100	5	392	4	115
1/125	5	392	4	115
1/230	5	588	6	115
1/280	6	588	6	120
1/500	6	588	6	120

